



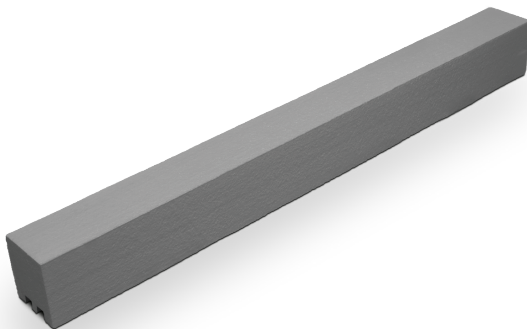
## DESCRIPTION

**High-quality, American-made shower elements add consistency, style, and functionality to any custom tile or stone shower installation**

- ◊ Waterproof Coating is Meets ANSI 118.10 Requirements
- ◊ Quick & Easy to Install - Save Time & Money
- ◊ Strong and Lightweight
- ◊ Constructed of High-Density Polystyrene
- ◊ Interior & Exterior Applications
- ◊ Made in the USA
- ◊ Comes in Standard 48", 60", and 72" Lengths
- ◊ Easy to Cut to Size
- ◊ **Custom Sizes Available**

## AVAILABLE STYLES/SIZES

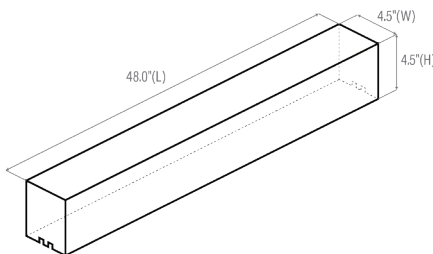
### SOLID CURB



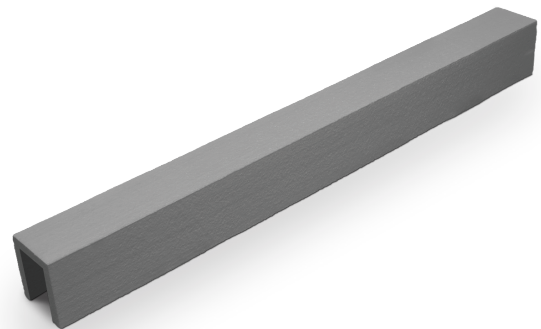
**Standard Available Sizes:**

4.5" Width  
48", 60", and 72" Lengths  
2.5", 4.5", and 5" Heights

**CUSTOM SIZES AVAILABLE**



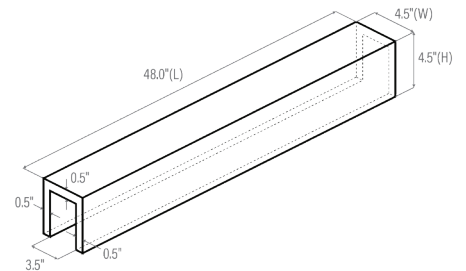
### CURB-OVER



**Standard Available Sizes:**

4.5" Width  
48", 60", and 72" Lengths  
2.5", 4.5", and 5" Heights

**CUSTOM SIZES AVAILABLE**



**Compotite Curbs are quick and easy to install and ready to tile. In general it is important that the unit is properly supported in place and that a waterproof seal has been established.**

## SOLID CURB INSTALLATION

---

1. Compotite Coated Curbs are waterproof and ready to install.
2. If needed, cut curb to length of the shower entry
3. The curb needs to be installed with walls that are plumb and square for best results. Place the unit in the desired position to make sure a relatively snug fit will result upon installation.
4. Prior to installation, waterproof the entire area behind the unit using Composeal Aqua Shell RS Liquid Applied Waterproofing Membrane or similar, according to manufacturers instructions.
5. Once dry use a ½" square notch trowel to apply a latex modified thin set mortar to the floor and walls according to ANSI 108.10 guidelines. Slide the unit in place with maximum surface coverage.
6. Once mortar is set apply a minimum of 4 inch strips of Composeal Reinforcing Fabric with Liquid Applied Waterproofing Membrane to each seem between the unit and the wall and floor.
7. Allow membrane to dry before installing your tile. Ideally, you will waterproof the entire shower enclosure using a Liquid Applied Waterproofing Membrane to ensure maximum protection from secondary water damage.

## CURB-OVER INSTALLATION

---

1. Compotite Coated Curbs are waterproof and ready to install.
2. Cut Curb-Over to length of curb at shower entry
3. The curb needs to be installed with walls that are plumb and square for best results. Place the unit in the desired position to make sure a relatively snug fit will result upon installation.
4. Prior to installation, waterproof the entire area behind the unit using Composeal Aqua Shell RS Liquid Applied Waterproofing Membrane or similar, according to manufacturers instructions.
5. Once dry use a ½" square notch trowel to apply a latex modified thin set mortar to the floor and walls according to ANSI 108.10 guidelines. Set Curb-Over on top of pre-built 2x4 curb making sure these is solid contact along the length of the curb.
6. You can secure the Curb-Over by setting screw and washer on the outside portion of the Curb-Over. Do not puncture waterproofing seal on top or inside of curb.
7. Once mortar is set apply a minimum of 4 inch strips of Composeal Reinforcing Fabric with Liquid Applied Waterproofing Membrane to each seem between the unit and the wall and floor.
8. Allow membrane to dry before installing your tile. Ideally, you will waterproof the entire shower enclosure using a Liquid Applied Waterproofing Membrane to ensure maximum protection from secondary water damage.

**After curb is set in place check to make sure waterproof coating has remained intact from installation. If there are punctures or other compromises in the coating it is recommended to apply two coats of Composeal AquaShell or other liquid applied waterproofing membrane to ensure a waterproof seal.**

## LIMITATIONS

---

- ◇ Curbs must be covered with ceramic or stone tile.
- ◇ All surfaces must have the structural integrity to support ceramic or stone tile.
- ◇ Do not use mastics, rubber solvents or ketones with this product.
- ◇ Avoid prolonged exposure to direct sun or weather.