

INSTALLATION INSTRUCTIONS FOR CEILINGS, WALLS, AND FLOORS

Compotite Cement Foam Backer Board

Compotite Cement foam backer board is polystyrene (XPS) core between two fiberglass mesh layers coated in a cement coating. The polystyrene core is 100% waterproof and resistant to any mold or mildew. This construction method is also resistant to vapor pressure and provides great heat insulation. Compotite cement foam board easily installs directly to any framed wall and allows for excellent bonding for tile or stone installation when a waterproof substrate is required. This Backer board is lightweight and is extremely easy for any installer to use.



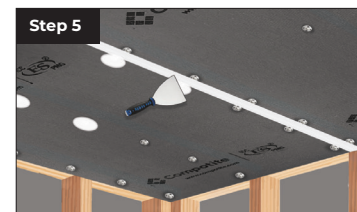
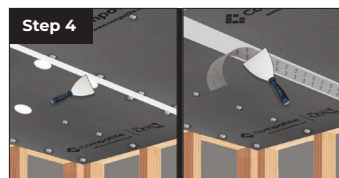
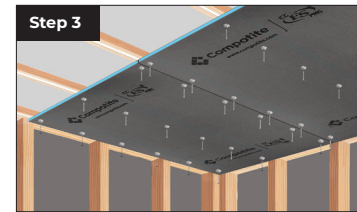
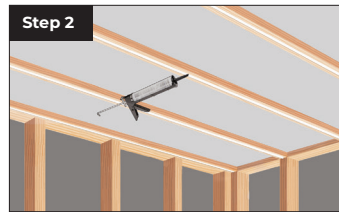
TOOLS NEEDED

- ◆ Carpenter Pencil
- ◆ Exacto Knife
- ◆ Tape Measure
- ◆ Impact Driver (Phillips head bit)
- ◆ Caulking Gun
- ◆ Straight Edge
- ◆ Jig Saw
- ◆ Putty Knife
- ◆ 1/4" x 3/8" Trowel

For proper installation, ceilings should be completed first. When waterproofing is required, all Compotite cement foam board joints and screws must be sealed. All substrates should be clean, level, dry and structurally sound for proper installation.

CEILINGS

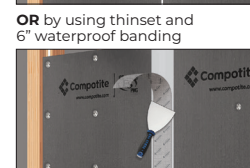
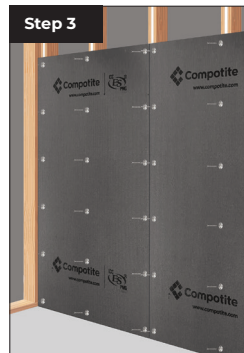
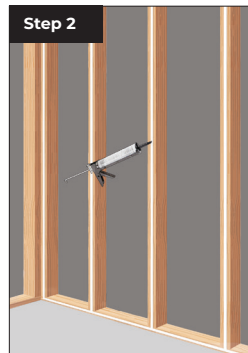
1. Trim and pre-fit Compotite Cement Foam Backer Board to cover the ceiling.
2. Fasten the boards to each ceiling joist/ truss by applying a 3/8" bead of Elastiseal Pro on each joist/ truss that will be covered by the Compotite Cement Foam Backer Board.
3. If using Elastiseal Pro, fasten the boards with Compotite screws and washers installed every 12" (Make sure the washers are countersunk just below the surface of the board). If no Elastiseal Pro is used, install Compotite screws and washers every 6"
4. Joints can be sealed by either applying a 1/2" bead of Elastiseal Pro on all adjoining corners and edges of each board and then tooling the beads flat to create a seal or by applying Compotite's 6" seam tape with modified thinset.
5. Fill the washer depressions with Elastiseal Pro and then tool it to a flat surface creating a waterproof seal.



Seal joints using Elastiseal Pro **OR** use thinset and 6" waterproof banding

WALLS

1. Trim and pre-fit Compotite Cement Foam Backer Board to cover the wall.
2. Fasten the boards to each wall stud by applying a 3/8" bead of Elastiseal Pro on each joist/ truss that will be covered by the Compotite cement foam backer board.
3. If using Elastiseal Pro, fasten the boards with Compotite screws and washers installed every 12" (Make sure the washers are countersunk just below the surface of the board). If no Elastiseal Pro is used, install Compotite screws and washers every 6"
4. Joints can be sealed by either applying a 1/2" bead of Elastiseal Pro on all adjoining corners and edges of each board and then tooling the beads flat to create a seal or by applying Compotite's 6" seam tape with modified thinset.
5. Fill the washer depressions with Elastiseal Pro and then tool it to a flat surface creating a waterproof seal.



Seal joints using Elastiseal Pro

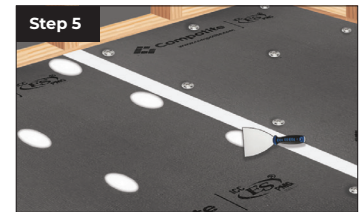
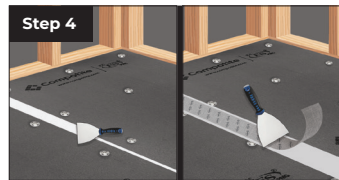
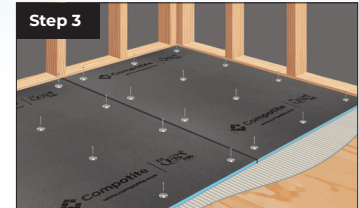
OR by using thinset and 6" waterproof banding

INSTALLATION INSTRUCTIONS FOR CEILINGS, WALLS, AND FLOORS

For Floor installations with a plywood substrate, Compotite Cement Foam Backer Board can be used as a spacer or as an adapter. For installations on floors with a concrete substrate, Compotite Cement Foam Backer Board can be used as a tile underlayment. Elastiseal Pro adhesive must be used between all joints and coated over all Compotite's fasteners (screws and washers) for all waterproof installations. For all installations, make certain that the substrate is clean, dry, flat, and structurally sound.

PLYWOOD FLOORS

1. Trim and pre-fit Compotite Cement Foam Backer Board to cover the floor
2. Apply modified thin set to the entire floor surface using a 1/4" x 3/8" square-notch trowel. Properly coat the entire underside of each board before setting in place.
3. Fasten the boards with Compotite screws and washers installed every 12" (Make sure the washers are countersunk just below the surface of the board). For areas that do not require waterproofing, the installation is complete once the mortar is set according to manufacturer timelines. **For areas that require waterproofing, please continue to steps 4 and 5.**
4. For waterproofing installations, joints should be sealed by either applying a 1/2" bead of Elastiseal Pro on all adjoining corners and edges of each board and then tooling the beads flat to create a seal or by applying Compotite's 6" seam tape with modified thinset.
5. Fill the washer depressions with Elastiseal Pro and then tool it to a flat surface creating a waterproof seal. The installation is complete once the mortar is set according to manufacturer timelines.

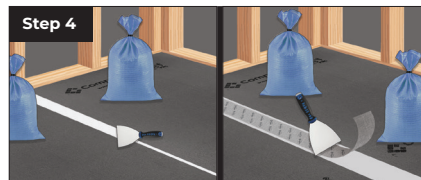
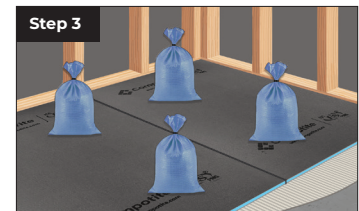


Seal joints using Elastiseal Pro

OR use thinset and 6" waterproof banding

CONCRETE FLOORS

1. Trim and pre-fit Compotite Cement Foam Backer Board to cover the floor
2. Apply modified thin set to the entire floor surface using a 1/4" x 3/8" square-notch trowel. Properly coat the entire underside of each board before setting in place.
3. Apply weights (such as sand bags or bags of mortar) staggered every 24" to hold the panels in place until the thinset is cured. For areas that do not require waterproofing, the installation is complete once the mortar is set according to manufacturer timelines. **For areas that require waterproofing, please continue to step 4.**
4. For waterproofing installations, joints should be sealed by either applying a 1/2" bead of Elastiseal Pro on all adjoining corners and edges of each board and then tooling the beads flat to create a seal or by applying Compotite's 6" seam tape with modified thinset. The installation is complete once the mortar is set according to manufacturer timelines.



Seal joints using Elastiseal Pro

OR use thinset and 6" waterproof banding