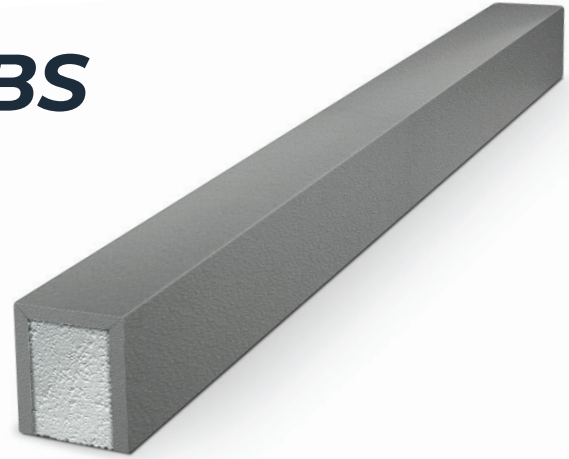


COMPOTITE**PVC SHOWER CURBS****STEP-BY-STEP INSTRUCTIONS FOR INSTALLING
COMPOTITE PVC CURBS**

Compotite PVC Curbs provide a durable, waterproof, and easy-to-install solution for creating a defined transition between the shower area and the bathroom floor. Proper installation with thin-set mortar or Compotite Elastiseal Pro, along with seam tape and corners, ensures a watertight and long-lasting finish.

**BENEFITS OF A PVC CURB**

- ◇ Waterproof and Durable: PVC curbs resist moisture, mold, and warping, making them ideal for wet areas.
- ◇ Ready-to-Tile Surface: Simplifies installation by providing a surface that's immediately ready for tile application.
- ◇ Customizable: Easy to cut and modify to fit various shower sizes and designs.
- ◇ Structural Support: Provides a sturdy base for glass shower doors or enclosures.

**MATERIALS AND
TOOLS REQUIRED**

- ◇ Compotite PVC Curb
- ◇ Thin-set mortar (ANSI A118.4 or A118.15 compliant)
- ◇ Compotite Elastiseal Pro
- ◇ Polyethylene (PE) seam tape and corners
- ◇ Measuring tape and level
- ◇ Notched trowel (1/4" x 3/8" recommended)
- ◇ Flat trowel
- ◇ Utility knife or saw (for trimming the curb)
- ◇ Sponge and clean bucket of water

PREPARATION**1. PREPARE THE SUBSTRATE**

- ◇ Ensure the shower floor and surrounding substrate are clean, level, and free of debris.
- ◇ If installing over a concrete floor, ensure it is smooth and dry.
- ◇ For plywood substrates, ensure they are exterior-grade and properly supported to prevent deflection.

2. DRY FIT THE CURB

- ◇ Position the Compotite PVC Curb in the desired location at the shower entrance.
- ◇ Ensure the curb aligns with the shower pan and is level.
- ◇ Trim the curb to fit using a utility knife or saw, if necessary.

3. WATERPROOF THE SUBSTRATE

- ◇ If not already done, apply a waterproofing layer (sheet or liquid membrane) to the shower floor and walls, ensuring overlap at the base of the curb.

INSTALLATION PROCESS

SECURE THE CURB WITH THIN-SET OR ELASTISEAL PRO

1. USING THIN-SET MORTAR:

- ◇ Mix thin-set mortar according to the manufacturer's instructions.
- ◇ Apply a layer of thin-set to the floor where the curb will be installed, using a notched trowel to create ridges.
- ◇ Position the curb into the mortar and press firmly to ensure full contact.
- ◇ Check with a level to ensure the curb is plumb and straight.

2. USING COMPOTITE ELASTISEAL PRO:

- ◇ Apply a generous bead of Elastiseal Pro to the base of the curb and the substrate.
- ◇ Set the curb into place, pressing it down firmly.
- ◇ Smooth excess Elastiseal Pro with a trowel for a clean seal.

SEAL THE CURB'S JOINTS AND EDGES WITH CORNERS AND SEAM TAPE

1. APPLY THIN-SET MORTAR OR ELASTISEAL PRO TO THE EDGES OF THE CURB WHERE IT MEETS THE SHOWER PAN AND WALLS.

2. INSTALL PE SEAM TAPE:

- ◇ Press seam tape over the curb's edges, ensuring it overlaps onto the pan and adjacent walls by at least 2 inches.
- ◇ Smooth the tape with a flat trowel to ensure full adhesion and eliminate air pockets.

3. INSTALL PE CORNERS:

- ◇ Use pre-formed PE corners at the junctions where the curb meets the walls.
- ◇ Secure the corners with thin-set or Elastiseal Pro, smoothing them into place with a trowel.

4. REINFORCE ALL SEAMS AND TRANSITIONS WITH A THIN LAYER OF ELASTISEAL PRO FOR ADDED WATERPROOFING.

BLEND THE CURB WITH THE WATERPROOFING SYSTEM

1. OVERLAP WATERPROOFING SHEET MEMBRANES ONTO THE CURB'S SURFACE, SECURING THEM WITH THIN-SET AND SEAM TAPE.

2. FOR LIQUID MEMBRANES, APPLY A CONTINUOUS COAT OVER THE CURB AND EXTEND ONTO THE SURROUNDING SURFACES, ENSURING COMPLETE COVERAGE.

FINAL STEPS

1. INSPECT AND ADJUST

- ◇ Ensure the curb is level, securely adhered, and properly sealed with no gaps or exposed edges.
- ◇ Adjust as needed before the mortar or Elastiseal Pro sets.

2. ALLOW FOR CURING

- ◇ Allow the thin-set mortar and Elastiseal Pro to cure according to the manufacturer's instructions before tiling.

3. PROCEED TO TILE INSTALLATION

- ◇ Once cured, apply thin-set mortar to the curb and tile it as part of the overall shower design.
- ◇ Use appropriate grout and sealants to finish the installation.

BEST PRACTICES

- ◇ **Plan Tile Layout:** Ensure the curb aligns with grout lines for a clean finish.
- ◇ **Use Pre-Formed Corners:** Simplify the sealing process and enhance waterproofing in critical areas.
- ◇ **Double Check Levels:** Ensure the curb is plumb and straight before the mortar sets, as it will affect door or enclosure installation.
- ◇ **Minimize Excess Material:** Clean away excess thin-set or Elastiseal Pro during installation to maintain a professional appearance.

By following these detailed instructions, professional tile installers can achieve a watertight, durable, and aesthetically pleasing installation for Compotite PVC Curbs, ensuring a high-quality shower enclosure.