

**STEP-BY-STEP INSTRUCTIONS
FOR INSTALLATION**

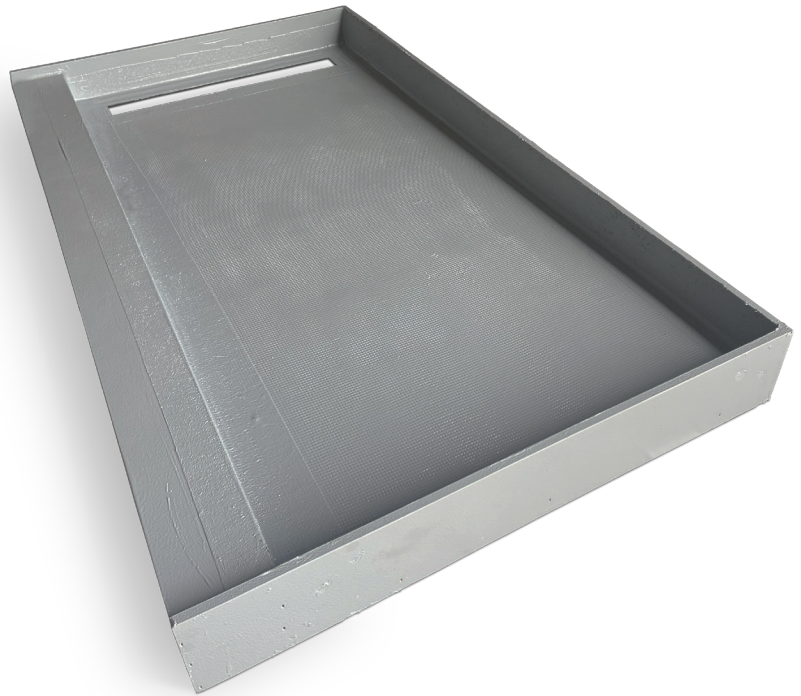
EPS FOAM SHOWER PAN WITH INTEGRATED PVC CURB AND SPLASH WALLS

This step-by-step guide explains how to properly install a Compotite EPS Shower Pan integrated with PVC Curb and Splash Walls, using thin-set mortar and Compotite Elastiseal Pro Caulk for a durable, watertight installation

MATERIALS NEEDED:

- ◇ Compotite EPS Shower Pan
- ◇ Compotite PVC Curb and Splash Walls
- ◇ Thin-set mortar (ANSI A118.4 compliant)
- ◇ Compotite Elastiseal Pro Caulk
- ◇ Trowel
- ◇ Mixing bucket and drill with paddle mixer
- ◇ Utility knife
- ◇ Level
- ◇ Tape measure
- ◇ Personal Protective Equipment (PPE)

This method ensures a robust, watertight, and durable installation of the Compotite EPS Foam Shower Pan with PVC Curb and Splash Walls.



INSTALLATION STEPS:

1. PREPARE THE SUBSTRATE

- ◇ Ensure the subfloor is clean, dry, level, and structurally sound.
- ◇ Verify the drain assembly is correctly installed and compatible with the shower pan.

2. DRY FIT THE SHOWER PAN

- ◇ Place the EPS Shower Pan onto the subfloor and align it with the drain assembly.
- ◇ Check for level and trim the pan if necessary to fit the space, using a utility knife.

3. DRY FIT THE PVC CURB AND SPLASH WALLS

- ◇ Position the PVC Curb along the shower entry and align the Splash Walls where required.
- ◇ Ensure all pieces fit snugly and align with the shower pan.

4. APPLY THIN-SET MORTAR FOR SHOWER PAN

- ◇ Mix the thin-set mortar according to the manufacturer's instructions.
- ◇ Using a notched trowel, spread a layer of thin-set onto the subfloor, ensuring even coverage.

5. INSTALL THE EPS SHOWER PAN

- ◇ Press the EPS Shower Pan firmly into the thin-set, aligning it with the drain assembly.
- ◇ Use a level to confirm the pan is properly set and adjust as necessary.

6. SECURE THE PVC CURB AND SPLASH WALLS

- ◇ Apply thin-set mortar along the bottom edges of the PVC Curb and Splash Walls where they will contact the subfloor or pan.
- ◇ Press the Curb and Splash Walls firmly into place.
- ◇ Use Compotite Elastiseal Pro Caulk to seal all seams and connections between the pan, curb, and walls. Smooth the caulk with a finishing tool.

7. SEAL ALL JOINTS AND CONNECTIONS

- ◇ Apply a bead of Elastiseal Pro Caulk along all seams, including:
 - ◇ Between the pan and curb.
 - ◇ Between the pan and splash walls.
 - ◇ Any joints between splash walls and adjacent surfaces.
 - ◇ Smooth the caulk for complete coverage and a watertight finish.

8. INSTALL THE DRAIN FLANGE

- ◇ Attach the drain flange to the drain assembly, ensuring a watertight seal per the drain manufacturer's instructions.
- ◇ Use Elastiseal Pro Caulk around the drain opening as needed.

9. ALLOW MATERIALS TO SET AND CURE

- ◇ Allow the thin-set mortar to cure according to the manufacturer's guidelines, typically 24 hours.
- ◇ Let the Elastiseal Pro Caulk cure fully before testing.

10. TEST FOR WATER TIGHTNESS (OPTIONAL BUT RECOMMENDED)

- ◇ Perform a water test to ensure the pan and seals are watertight before proceeding with tile installation.

11. PROCEED WITH TILE INSTALLATION

- ◇ Once everything is cured and watertight, proceed with tiling the shower pan, curb, and splash walls.
- ◇ Use appropriate thin-set and grout, ensuring cuts are precise for a professional finish.

TIPS FOR SUCCESS:

- ◇ Confirm all materials are compatible with each other and follow all manufacturer guidelines.
- ◇ Keep the work area clean to avoid contaminating seals and joints.
- ◇ Always wear PPE and work in a well-ventilated area when using Elastiseal Pro.
- ◇ This method ensures a robust, watertight, and durable installation of the Compotite EPS Shower Pan with PVC Curb and Splash Walls.

This method ensures a robust, watertight, and durable installation of the Compotite EPS Shower Pan with PVC Curb and Splash Walls.